

North Reading Public Schools

Enrollment Projections Presentation

November 18, 2019



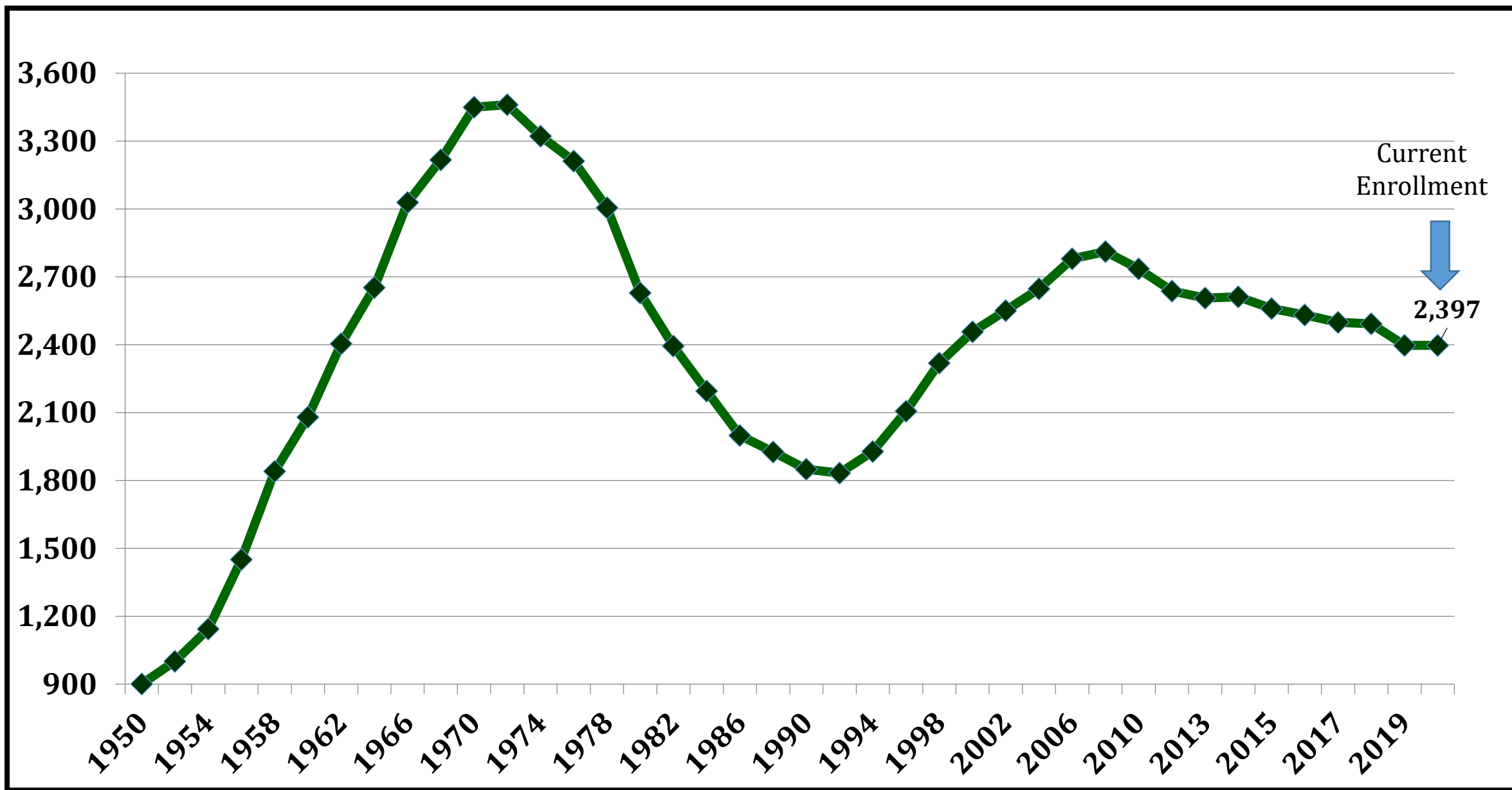


Methodology-Progression Ratio

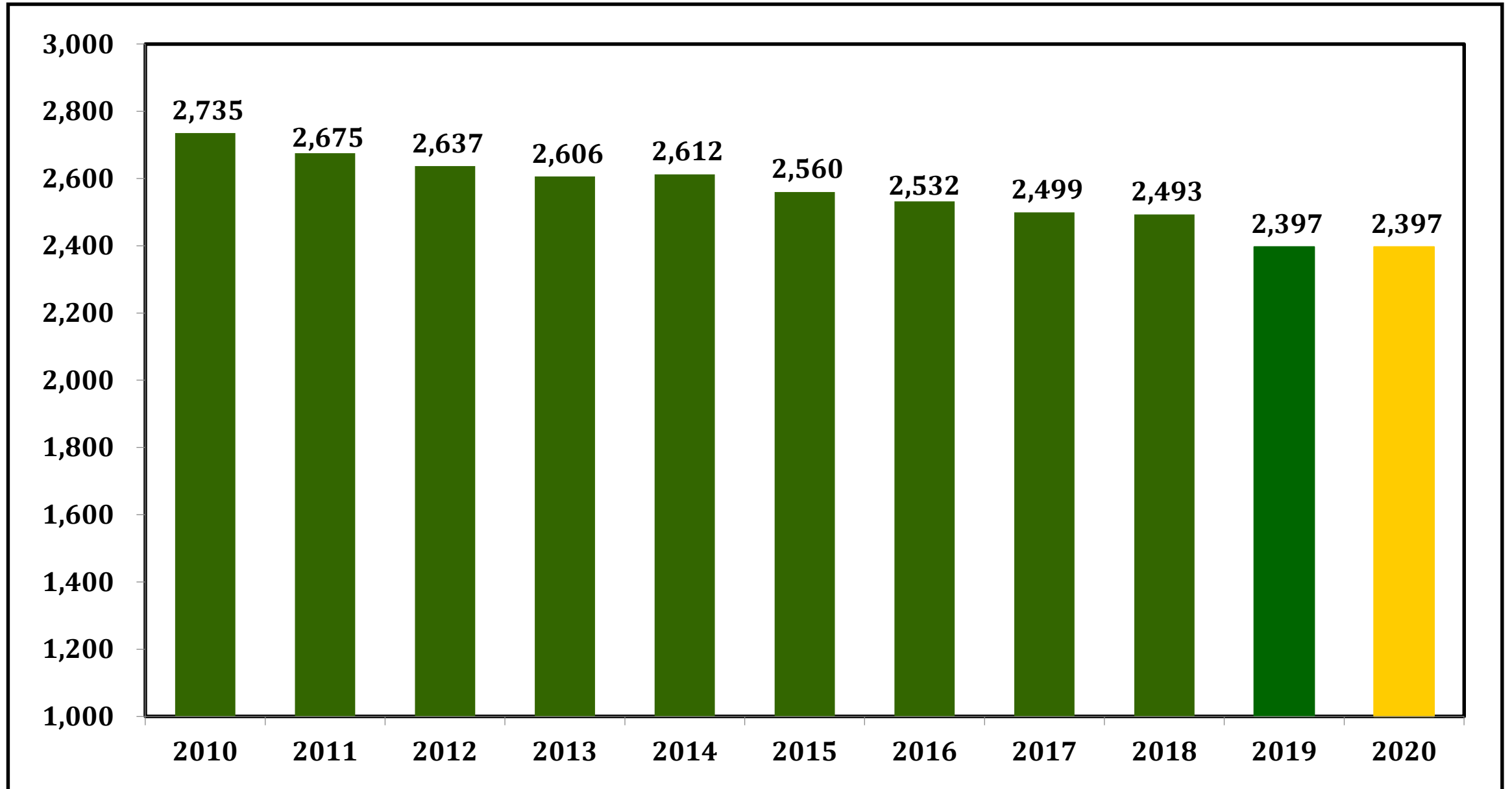
- What happened in the past will continue to happen in the future
- Percentages calculated from historical data help determine reliable % of increases or decreases between any two grades
- Ten Year trend considered most reliable given in and out migration has remained relatively stagnant
- Proposed or planned residential development and/or turnover of homes can impact the cohort numbers



Enrollment History

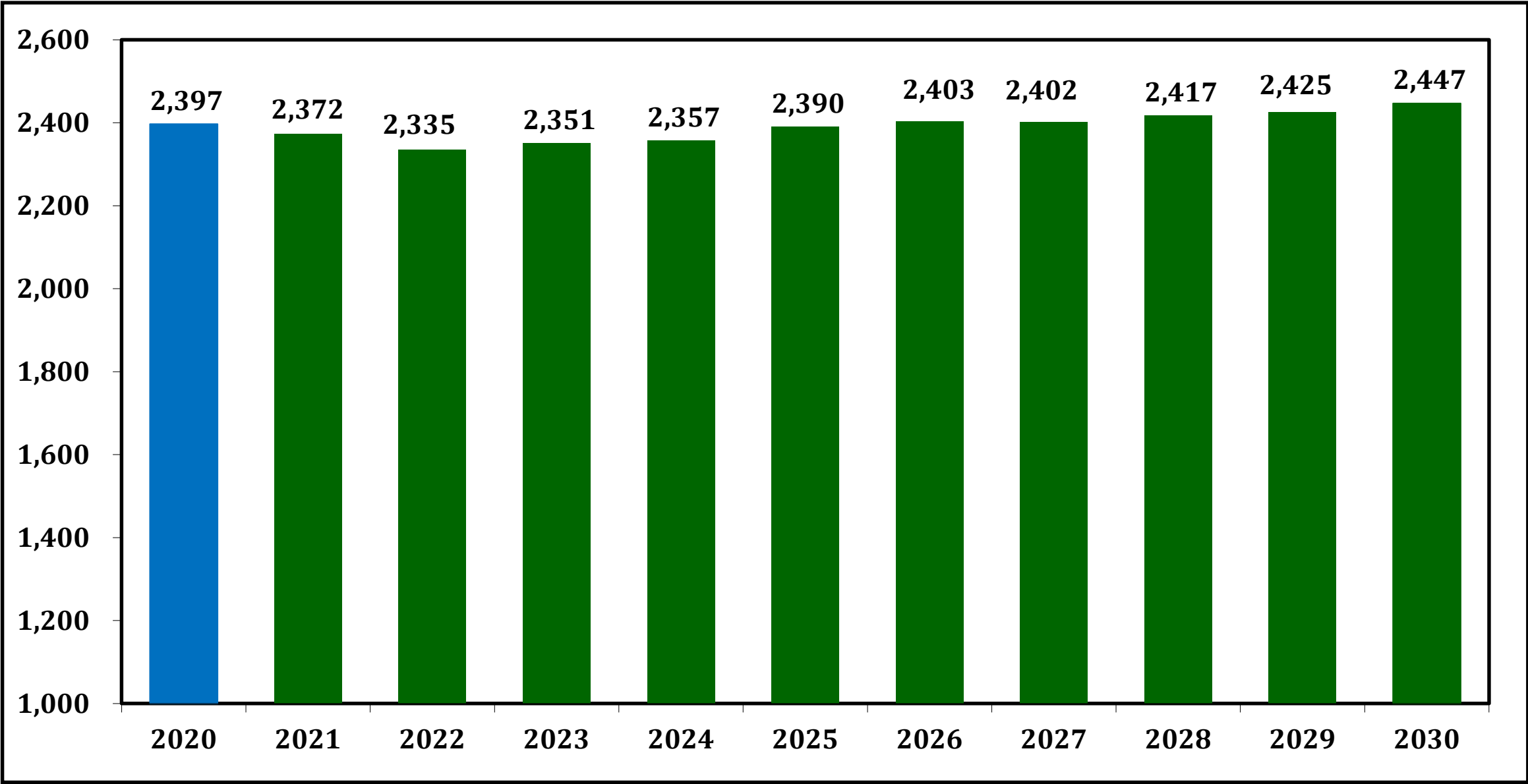


10 Year PK-12 Enrollment History





10 Year PK-12 Enrollment Projection

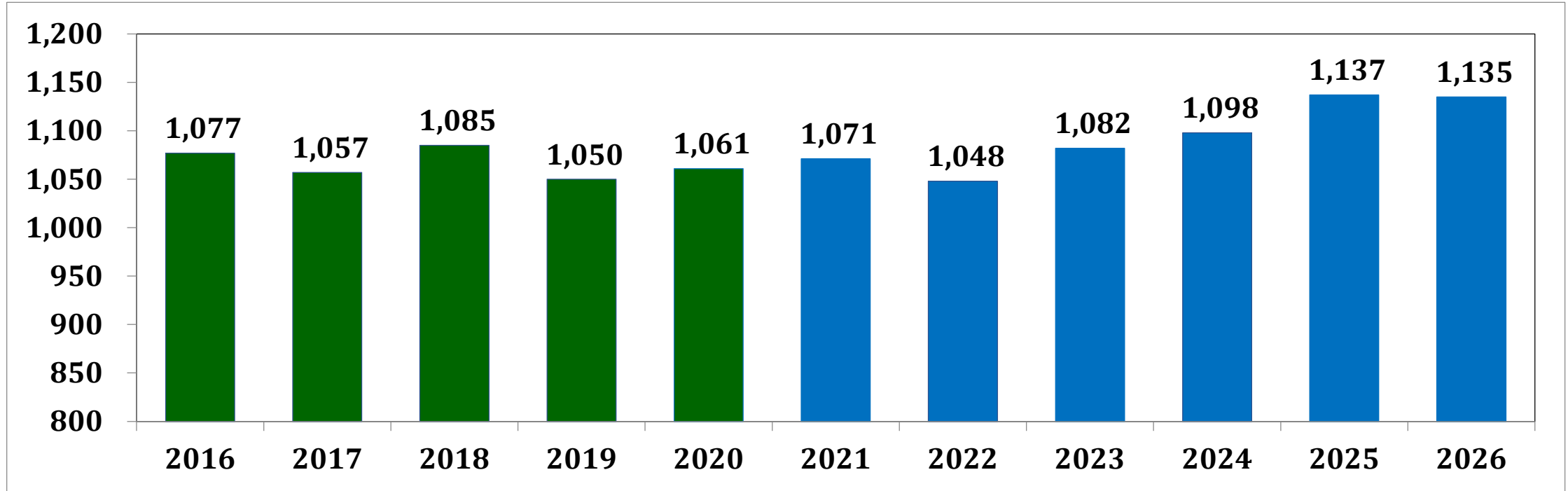




Projected Enrollment In-Grade Combinations

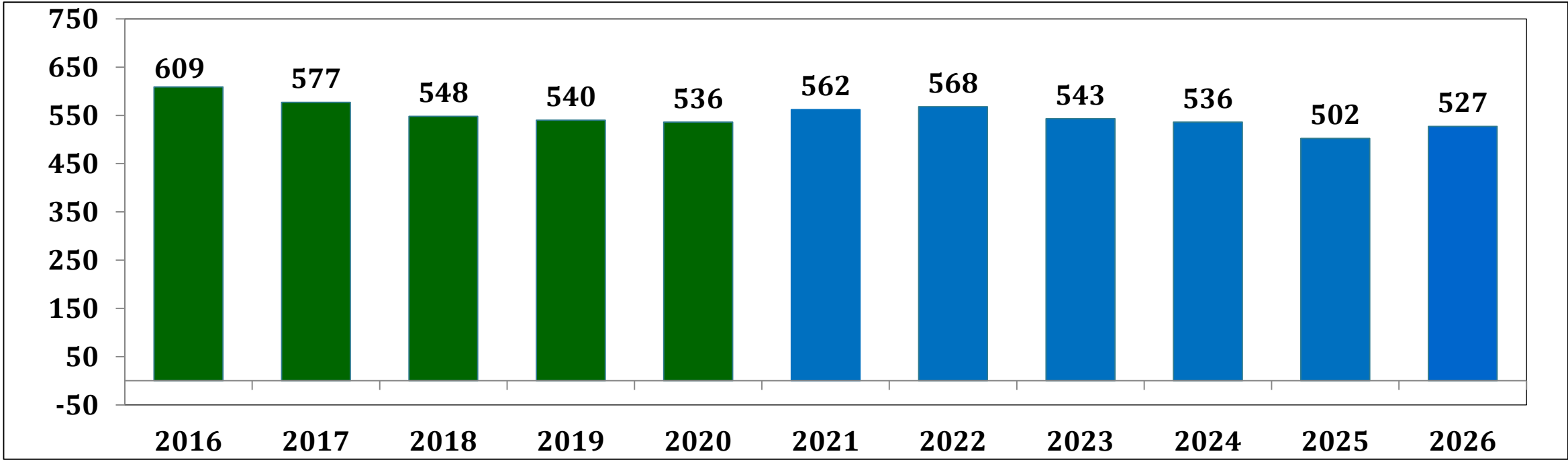
Projected Enrollment in Grade Combinations						
Year	PK-5	K-5	6-8	9-12	K-12	PK -12
2019-20 Actual	1,121	1,061	536	740	2,337	2,397
2020-21 Projection	1,126	1,071	562	684	2,317	2,372
2021-22 Projection	1,103	1,048	568	664	2,280	2,335
2022-23 Projection	1,135	1,082	543	673	2,298	2,351
2023-24 Projection	1,152	1,098	536	669	2,303	2,357
2024-25 Projection	1,191	1,137	502	697	2,336	2,390
2025-26 Projection	1,190	1,135	527	686	2,348	2,403
2026-27 Projection	1,191	1,136	543	668	2,347	2,402
2027-28 Projection	1,208	1,153	567	642	2,362	2,417
2028-29 Projection	1,198	1,143	578	649	2,370	2,425
2029-30 Projection	1,201	1,146	577	669	2,392	2,447

Elementary Enrollment



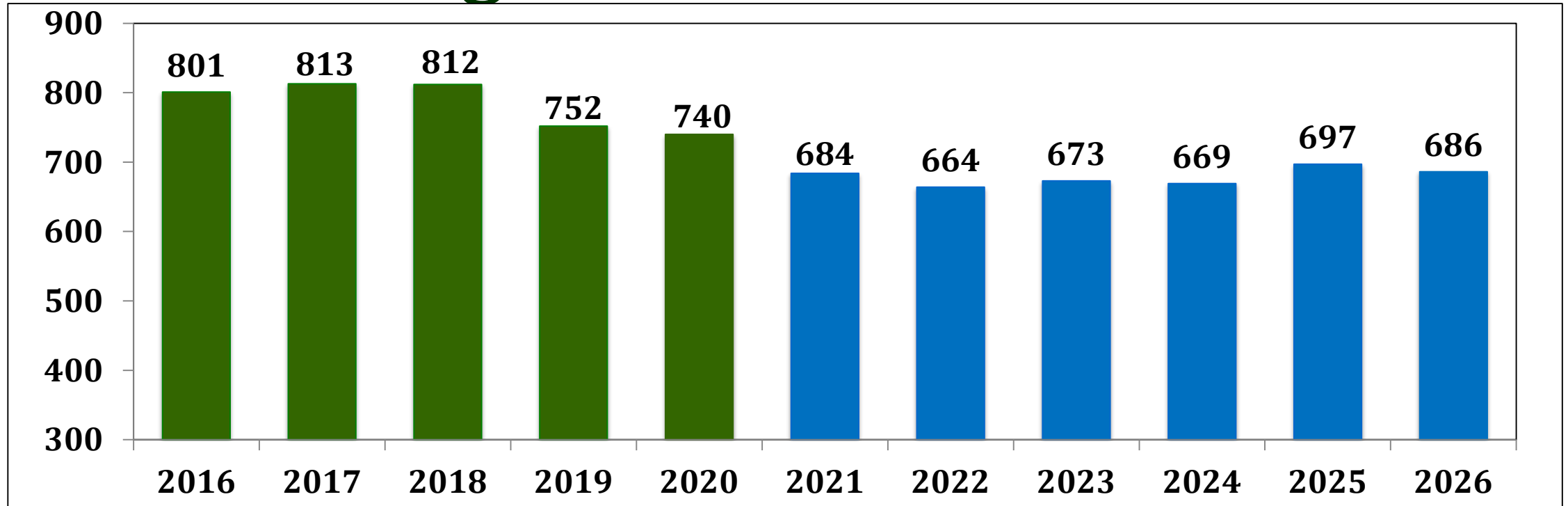
School Year	K	1.0	2.0	3.0	4.0	5.0	Total K-5
2019-20 Actual	196	151	174	169	188	183	1,061
2020-21 Projection	180	206	152	175	170	188	1,071
2021-22 Projection	167	189	193	153	176	170	1,048
2022-23 Projection	193	175	190	194	154	176	1,082
2023-24 Projection	179	203	176	191	195	154	1,098
2024-25 Projection	181	188	204	177	192	195	1,137

Middle School Enrollment



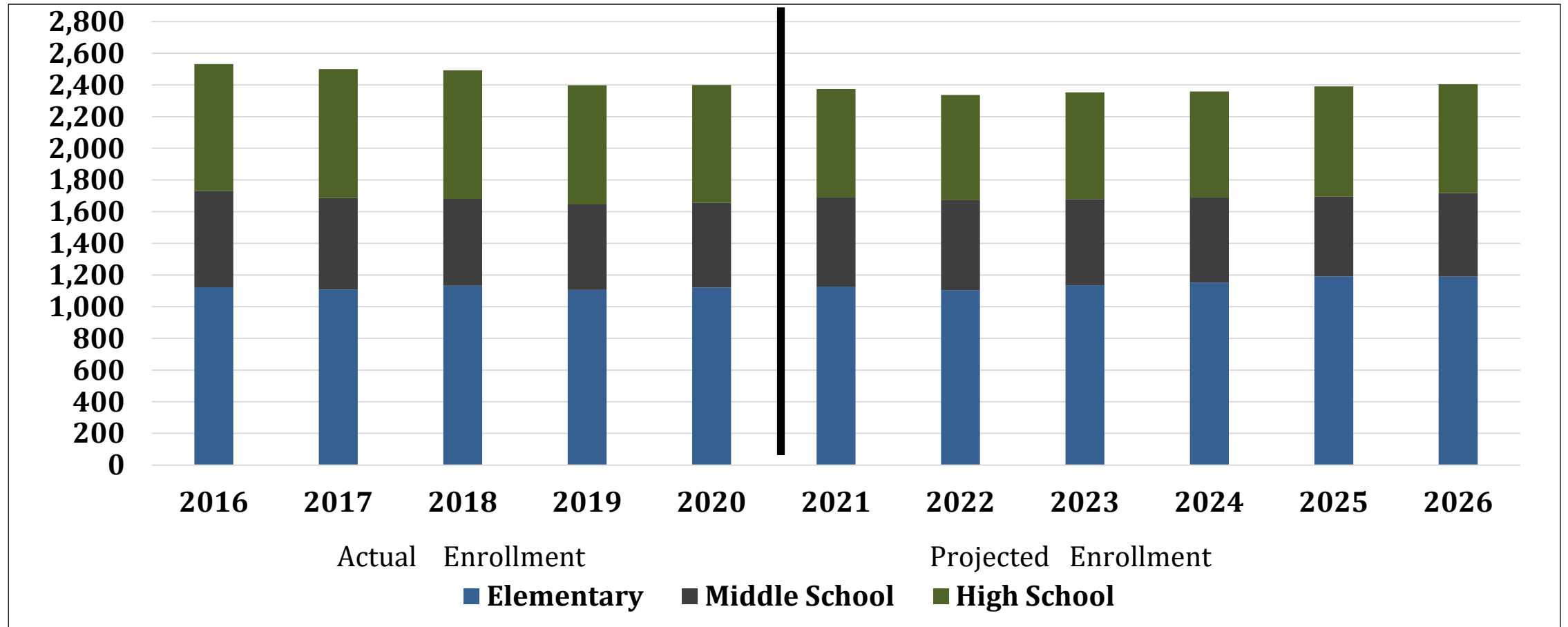
School Year	6	7	8	Total 6-8
2019-20 Actual	196	183	157	536
2020-21 Projection	184	196	182	562
2021-22 Projection	189	184	195	568
2022-23 Projection	171	189	183	543
2023-24 Projection	177	171	188	536
2024-25 Projection	155	177	170	502
2025-26 Projection	196	155	176	527

High School Enrollment



School Year	9	10	11	12	Ungraded	Total 9-12
2019-20 Actual	176	174	190	197	3	740
2020-21 Projection	148	175	173	188		684
2021-22 Projection	171	147	174	172		664
2022-23 Projection	183	170	147	173	0	673
2023-24 Projection	172	182	169	146	0	669
2024-25 Projection	177	171	181	168	0	697

North Reading Enrollment History and Projections



The biggest change in enrollment across the District over the next three years will be at the high school level, where enrollment is anticipated to decline by 68 students. The Elementary enrollment should experience a moderate increase of 20 students, and the Middle School will remain stable averaging about 550 students.



Summary

- District enrollment is expected to experience a moderate decline over the next five years before experiencing another increase.
- The greatest change in enrollment is anticipated to take place at the high school where we could see the enrollment decrease below 700 for the first time since 2005 within the next two years.
- Middle School enrollment will remain relatively stable and elementary K-5 enrollment will experience a moderate increase over the next five years.
- However, it is very likely these patterns will not last as long as ten years.
- As the economy and real estate market continue to improve in-migration may return to North Reading.
- There is already evidence of this being the case with an increase in homes sold and new homes being built.